

**NOTES**

The drawings are the copyright of Quattro Design Architects Ltd and are intended for the use of the client only. No part of these drawings may be reproduced, stored in a retrieval system, or transmitted in any form or by any means, electronic, mechanical, photocopying, recording, or by any information storage and retrieval system, without the prior written permission of Quattro Design Architects Ltd.

**REVISIONS**

REV DATE DESCRIPTION CHECKED BY  
- 07/JAN/2022 KDCG  
- 15/FEB/2022 KDCG  
- 30/JUN/2022 KDCG  
Red plan and client details updated



**DRAWING TITLE**

Site Location Plan

**PROJECT**

Chargrove Paddock  
Shurdington

**CLIENT**



**SCALE**

1:1250@A3  
March 2022

**DATE**









**DRAWING NO.**

5265/P/01

**REV**

A

1110 Oaklands, Longwall Street  
Buxton, Cheshire OL1 2HT  
T: 01625 42434

-  Render (Exact Product TBC)
-  Grey Brick (Exact Product TBC)
-  Timber Cladding (Exact Product TBC)
-  Grey Stone (Exact Product TBC)
-  Grey Windows and Doors (Exact Product TBC)
-  Grey Rainwater Goods (Exact Product TBC)

**NOTES**  
 The client is the copyright of Quattro Design Architects Ltd and all rights are reserved. No part of this drawing may be reproduced, stored in a retrieval system, or transmitted in any form or by any means, electronic, mechanical, photocopying, recording, or by any information storage and retrieval system, without the prior written permission of Quattro Design Architects Ltd.

**REVISIONS**  
 REV DATE DRAWN CHECKED NOTES  
 1 25/01/21 JLM KDCG  
 2 25/01/21 JLM KDCG  
 3 25/01/21 JLM KDCG  
 4 25/01/21 JLM KDCG  
 5 25/01/21 JLM KDCG  
 6 25/01/21 JLM KDCG  
 7 25/01/21 JLM KDCG  
 8 25/01/21 JLM KDCG  
 9 25/01/21 JLM KDCG  
 10 25/01/21 JLM KDCG  
 11 25/01/21 JLM KDCG  
 12 25/01/21 JLM KDCG  
 13 25/01/21 JLM KDCG  
 14 25/01/21 JLM KDCG  
 15 25/01/21 JLM KDCG  
 16 25/01/21 JLM KDCG  
 17 25/01/21 JLM KDCG  
 18 25/01/21 JLM KDCG  
 19 25/01/21 JLM KDCG  
 20 25/01/21 JLM KDCG  
 21 25/01/21 JLM KDCG  
 22 25/01/21 JLM KDCG  
 23 25/01/21 JLM KDCG  
 24 25/01/21 JLM KDCG  
 25 25/01/21 JLM KDCG  
 26 25/01/21 JLM KDCG  
 27 25/01/21 JLM KDCG  
 28 25/01/21 JLM KDCG  
 29 25/01/21 JLM KDCG  
 30 25/01/21 JLM KDCG  
 31 25/01/21 JLM KDCG  
 32 25/01/21 JLM KDCG  
 33 25/01/21 JLM KDCG  
 34 25/01/21 JLM KDCG  
 35 25/01/21 JLM KDCG  
 36 25/01/21 JLM KDCG  
 37 25/01/21 JLM KDCG  
 38 25/01/21 JLM KDCG  
 39 25/01/21 JLM KDCG  
 40 25/01/21 JLM KDCG  
 41 25/01/21 JLM KDCG  
 42 25/01/21 JLM KDCG  
 43 25/01/21 JLM KDCG  
 44 25/01/21 JLM KDCG  
 45 25/01/21 JLM KDCG  
 46 25/01/21 JLM KDCG  
 47 25/01/21 JLM KDCG  
 48 25/01/21 JLM KDCG  
 49 25/01/21 JLM KDCG  
 50 25/01/21 JLM KDCG  
 51 25/01/21 JLM KDCG  
 52 25/01/21 JLM KDCG  
 53 25/01/21 JLM KDCG  
 54 25/01/21 JLM KDCG  
 55 25/01/21 JLM KDCG  
 56 25/01/21 JLM KDCG  
 57 25/01/21 JLM KDCG  
 58 25/01/21 JLM KDCG  
 59 25/01/21 JLM KDCG  
 60 25/01/21 JLM KDCG  
 61 25/01/21 JLM KDCG  
 62 25/01/21 JLM KDCG  
 63 25/01/21 JLM KDCG  
 64 25/01/21 JLM KDCG  
 65 25/01/21 JLM KDCG  
 66 25/01/21 JLM KDCG  
 67 25/01/21 JLM KDCG  
 68 25/01/21 JLM KDCG  
 69 25/01/21 JLM KDCG  
 70 25/01/21 JLM KDCG  
 71 25/01/21 JLM KDCG  
 72 25/01/21 JLM KDCG  
 73 25/01/21 JLM KDCG  
 74 25/01/21 JLM KDCG  
 75 25/01/21 JLM KDCG  
 76 25/01/21 JLM KDCG  
 77 25/01/21 JLM KDCG  
 78 25/01/21 JLM KDCG  
 79 25/01/21 JLM KDCG  
 80 25/01/21 JLM KDCG  
 81 25/01/21 JLM KDCG  
 82 25/01/21 JLM KDCG  
 83 25/01/21 JLM KDCG  
 84 25/01/21 JLM KDCG  
 85 25/01/21 JLM KDCG  
 86 25/01/21 JLM KDCG  
 87 25/01/21 JLM KDCG  
 88 25/01/21 JLM KDCG  
 89 25/01/21 JLM KDCG  
 90 25/01/21 JLM KDCG  
 91 25/01/21 JLM KDCG  
 92 25/01/21 JLM KDCG  
 93 25/01/21 JLM KDCG  
 94 25/01/21 JLM KDCG  
 95 25/01/21 JLM KDCG  
 96 25/01/21 JLM KDCG  
 97 25/01/21 JLM KDCG  
 98 25/01/21 JLM KDCG  
 99 25/01/21 JLM KDCG  
 100 25/01/21 JLM KDCG



South-East Elevation



North-East Elevation



North-West Elevation



South-West Elevation

**DRAWING TITLE**  
 Proposed Elevations

**PROJECT**  
 Chargrove Paddock,  
 Shurdington  
**CLIENT**  
 [Redacted]

**SCALE**  
 1:200 @ A2  
**DATE**  
 Nov 2021

**DRAWING NO.**  
 5265-P-700  
**REV**  
 C



**Quattro**  
 design architects  
 11 LITTLEWOOD ROAD, SHURDINGTON, GLOS. GL53 7JF  
 01202 62884  
 01202 62885  
 01202 62886  
 01202 62887  
 01202 62888  
 01202 62889  
 01202 62890  
 01202 62891  
 01202 62892  
 01202 62893  
 01202 62894  
 01202 62895  
 01202 62896  
 01202 62897  
 01202 62898  
 01202 62899  
 01202 62900

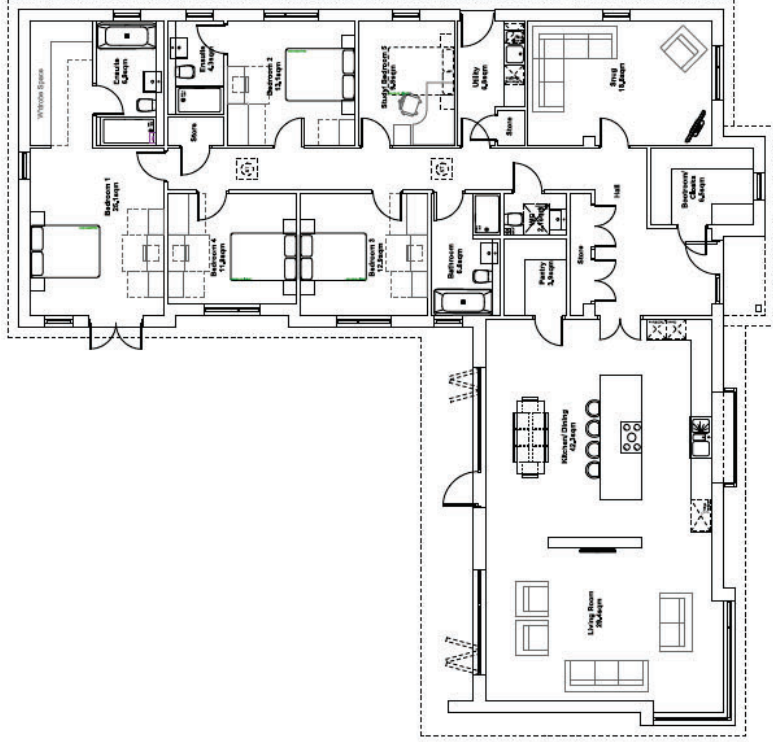
----- Extents of Roof Overhang

**NOTES**

This drawing is the property of Quattro Design Architects. It shall not be reproduced, stored in a retrieval system, or transmitted in any form or by any means, electronic, mechanical, photocopying, recording, or by any information storage and retrieval system, without the prior written permission of Quattro Design Architects.

**REVISIONS** - CHECKED NOTES

- 22.08.21 - LM - KDDC: Drawing created.
- A. 25.01.21 - JM - KDDC: Layout revised to match proposed elevations.
- B. 02.11.21 - LM - KDDC: Layout Revised to match proposed elevations.
- Client: L2022 KDDC; Client Details updated.



**DRAWING TITLE**

Proposed Floor Plan  
@242,2sqm / 2607,7sqft

**PROJECT**

Chargrove Paddock,  
Shurdlington

**CLIENT**



**SCALE** 1:100@A2

**DATE** Sept 2021



**DRAWING NO.** 5265-P-200

**REV** C

Northen Waterhouse, High Orchard Street  
Boscobel Quays, GL2 5DZ T: 01608 461104



